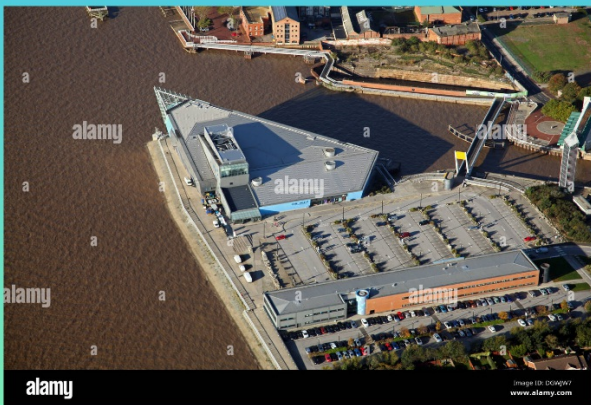




Which of these photos is an aerial photograph?

Engage
(max 5 mins)



How do you know?

WALT: use map symbols to design an aerial map.

Success criteria:

- I remember what an aerial map is
- I remember what a key is
- I can design my own underwater world aerial map
- I can create a key for my aerial map



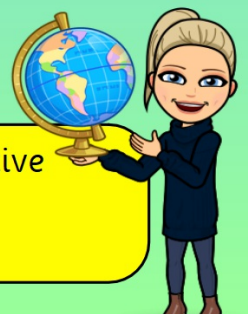
aerial map

landmark

perspective

symbol

key



Let's
Recap



What is an aerial map?

An aerial map is a map that shows key landmarks in an area from up above.



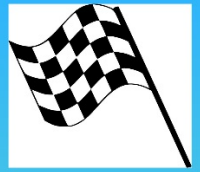
What is a key on an aerial map?

A key is a list of symbols of things we find on a map.

For example, the symbol for building is:



Let's remind ourselves of some of our aerial map symbols...



Match the symbol to its label.



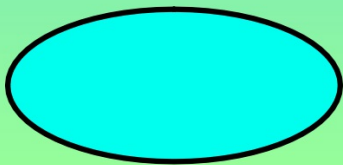
trees



footpath



water



river

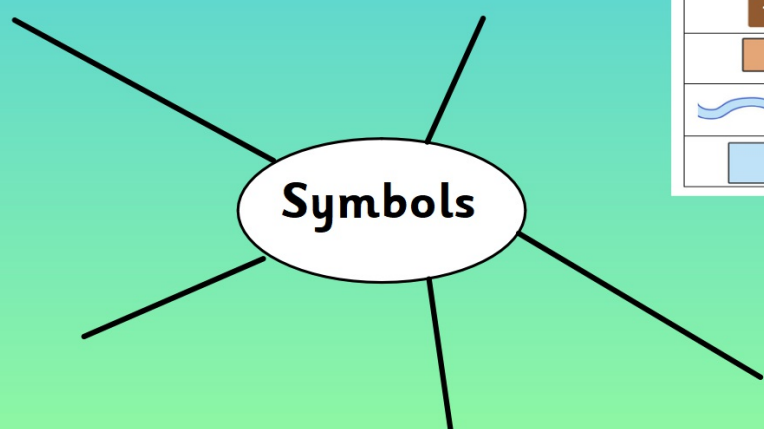
Today we are going to be designing an aerial map for an imaginary underwater world.

Introduce



What symbols could we use for a underwater world?

	Main road
	Motorway
	Footpath
	Single track
	Station
	Coniferous trees
	Place of worship
	Building
	River
	Water



In small groups, generate as many ideas as you can of symbols you would like to use in your map.

Consider & Practise

Consider & Practise

Symbols

Watch this video to learn about your compass points!

Going Deeper

Let's Learn the Directions North, South, East, and West



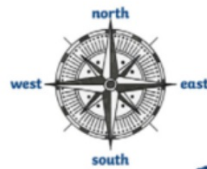
0:05 / 1:56

Deepening

Deepening

Using map directions of north, south, east and west can you write sentences to describe your map to someone else?

Example – the seahorse school is south of the shipwreck.



Handwriting practice lines consisting of multiple sets of horizontal lines (top, middle, bottom) for writing.