

Let's
Recap

Introduce



What can we do to solve this equation?

$$13 - 5 =$$

Steps

1. Draw the tens and ones
2. exchange 1 ten for 10 ones
3. Subtract the number
4. Write the answer.



Let's
Recap



Introduce

What can we do to solve this equation?

$$24 - 7 =$$

Steps

1. Draw the tens and ones
2. exchange 1 ten for 10 ones
3. Subtract the number
4. Write the answer.



Let's
Recap



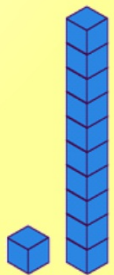
Introduce

What can we do to solve this equation?

$$41 - 12 =$$

Steps

1. Draw the tens and ones
2. exchange 1 ten for 10 ones
3. Subtract the number
4. Write the answer.



Let's
Recap



Introduce

What can we do to solve this equation?

$$32 - 8 =$$

Steps

1. Draw the tens and ones
2. exchange 1 ten for 10 ones
3. Subtract the number
4. Write the answer.



Let's
Recap



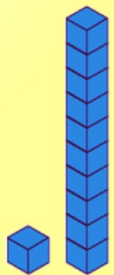
Introduce

What can we do to solve this equation?

$$25 - 16 =$$

Steps

1. Draw the tens and ones
2. exchange 1 ten for 10 ones
3. Subtract the number
4. Write the answer.



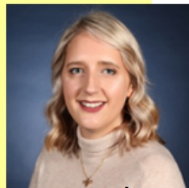


Mrs Granger has been practising her subtraction equations.



$$24 - 16 = 18$$

Miss Hughes thinks she is correct. What do you think?



I think Mrs Granger is because

Now it's your turn.

Write these equations into your book and solve them

Independent
Task

$71 - 7 =$

$53 - 8 =$

$90 - 13 =$

$37 - 14 =$

$43 - 25 =$

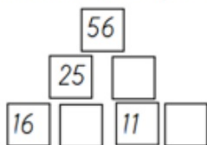
$42 - 34 =$

Step 1: Write the equation
Step 2: Draw the tens and ones for the whole
Step 3: Cross out ONE ten rod and draw TEN one cubes for the exchange
Step 4: Cross out the tens and ones for the part you are subtracting
Step 5: Count up the tens and ones left and write the answer

$$\begin{array}{r} 41 - 25 = 16 \\ \hline \cancel{4} \cancel{1} - \cancel{2} \cancel{5} \\ \hline 1 \text{ ten rod} \\ 6 \text{ one cubes} \end{array}$$

Deepening

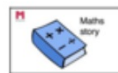
Use your subtraction skills to complete the pyramid.



Mrs P has 33 sweets. She eats 19. How many has she got left?

24.3.22
Key Learning: to subtract two 2-digit numbers together crossing tens

Deepening



Use your knowledge to complete the equation.

Correct the errors

$16 - 7 = 9$

$34 - 16 = 23$

$46 - 29 = 14$



$2 \square - \square 5 = 6$

