

Engage



- 🗝️ What do these paintings have in common?
- 🗝️ What do you like about them?

Introduce

(5 mins)

**Key Learning:** To develop a wide range of art and design

using different techniques

**Context:** David Hockney

### Success Criteria

- Identify the features of David Hockney's work.
- Practice lines that represent waves.
- Paint different shades of blue.

### Deepening:



shade

curved lines

sketch

paint

## Some fun facts about David Hockney...

Introduce

(5 mins)

- He is one of the most famous British artists of the 20th century.
- He was born in Bradford in 1937.
- Hockney painted pictures of both English and American scenes because he has houses in London and California.
- He experimented with **photomontage**. → This means putting different photos together to make an image.



Introduce

(5 mins)

Many of Hockney's paintings feature water. He experimented with painting **swimming pool** scenes.



Can you remember which other artist we have looked at painted pictures with water?

**Henri Matisse**

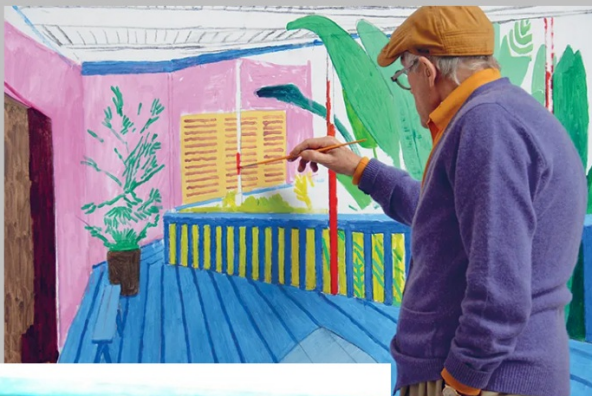




Introduce

(5 mins)

He also painted scenes featuring lots of **line work**- including straight, rigid lines and curved lines.



Can you remember which other artist we have looked at used lots of **line work**?

**L. S. Lowry**





**What can you notice about how Hockney painted water pictures?**

Practise  
and  
consider



- Curved, wavy lines
- Different shades of blue shapes which create the pattern of waves and water

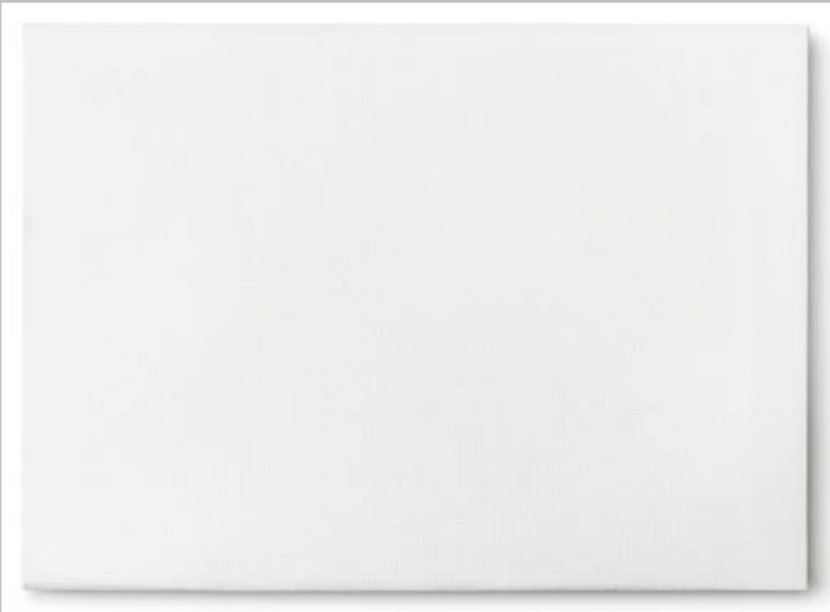
**This makes it look like the water is moving!**

## Your turn

Practise  
and  
consider

Let's have a go at drawing some curved lines like Hockney  
in our sketchbooks using our **pencils!**

Get a big piece  
of paper &  
model drawing  
curved lines to  
create waves

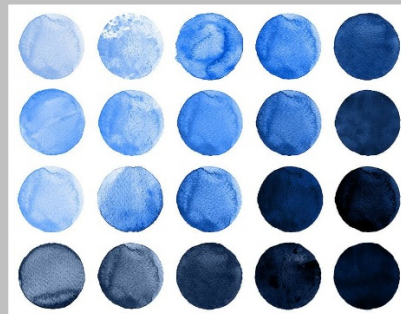


*Remember...*

**You need to create  
shapes that are big  
enough to paint**

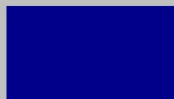
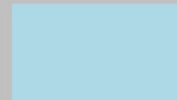
**Now we need to paint our pictures!**

Practise  
and  
consider



**How are we going to create different shades of blue?**

Always start with light blue by adding blue paint to white paint



Add more blue paint to make a darker shade of blue

Add green paint to make a different shade of blue



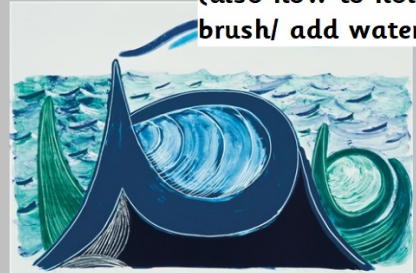


## Your turn

Let's practice making different shades of blue in our **sketchbooks!**

Practise  
and  
consider

Model painting  
different shades of  
blue on paper  
(also how to hold  
brush/ add water)



### Remember...

To make a **light shade of blue**, add a bit of blue paint to white paint

To make a **darker shade of blue**, add more blue paint

To make a **different shade of blue**, try adding green paint

**Now let's have a go on cartridge paper!**

Independent  
task

Model painting  
the sketch you  
made earlier

1. Sketch the lines for your waves **in pencil**.
2. Paint different parts of your picture with different shades of blue. Make sure you use different colours for sections that are next to each other!



### *Remember...*

To make a **light shade of blue**, add a bit of blue paint to white paint

To make a **darker shade of blue**, add more blue paint

To make a **different shade of blue**, try adding green paint

## Let's recap.

- What effect does Hockney's use of curved lines have when painting water scenes?
- Did you prefer Hockney or Matisse's technique for creating water scenes?



