

Introduce



Allow time for the children to explore with magnifying glasses, to demonstrate the zooming in and out aspect. Image getting larger and smaller .

Perhaps could use a picture from the *Gruffalo*.



practise

WALT: Use map skills to understand I am part of a wider world



Star Words



Millhouses

United Kingdom

Sheffield

England

Engage

Pretend to fly, to run off some energy

A few lessons ago we imagined we were owl, flying over the woods.



We saw the world from above, in what is called an



aerial view



Look at *digi maps website*

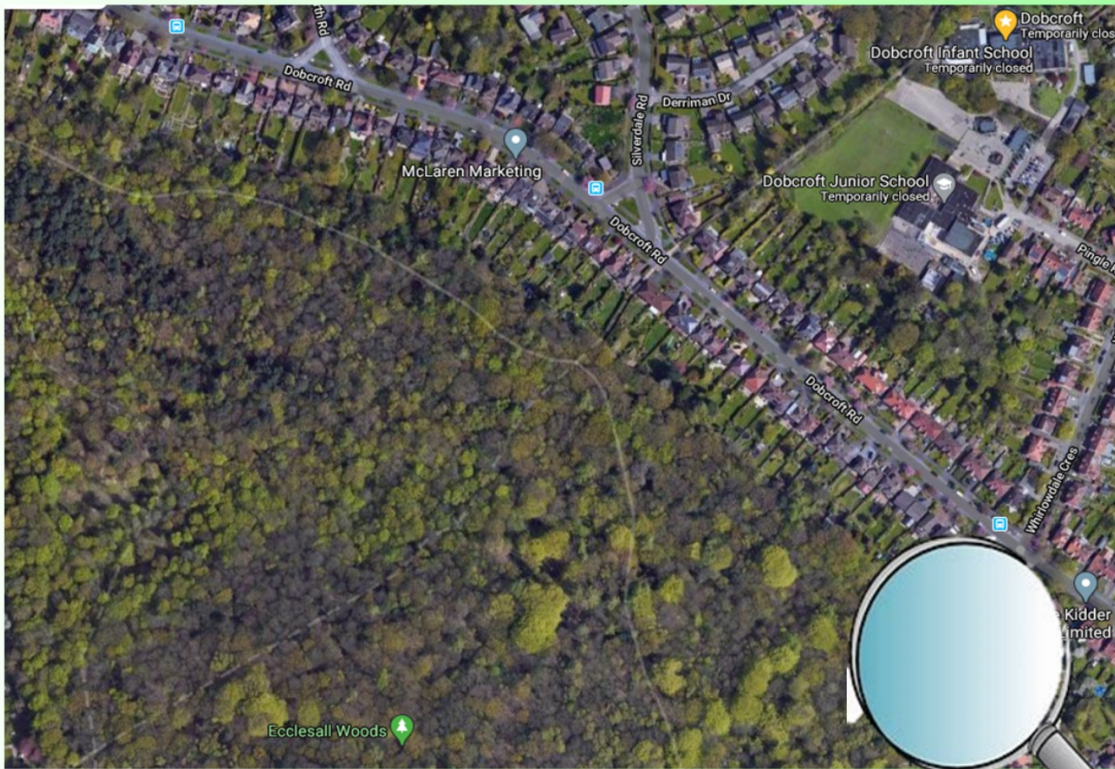
We have been using a map when looking to the Gruffalo's wood.



Who can remember the name of this wood?



We saw our local area, which is called Millhouses



When we zoomed in to look,
Ecclesall woods was very close to our
school.

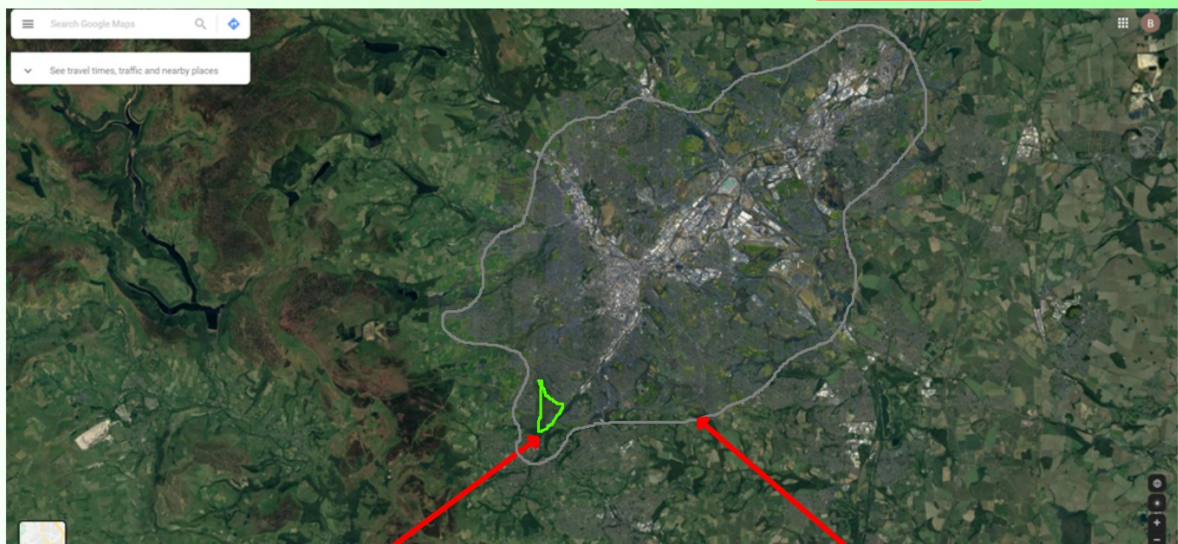
Introduce

But what about if we zoomed out rather than in....

I would demonstrate zooming in and out on google

We would see our city

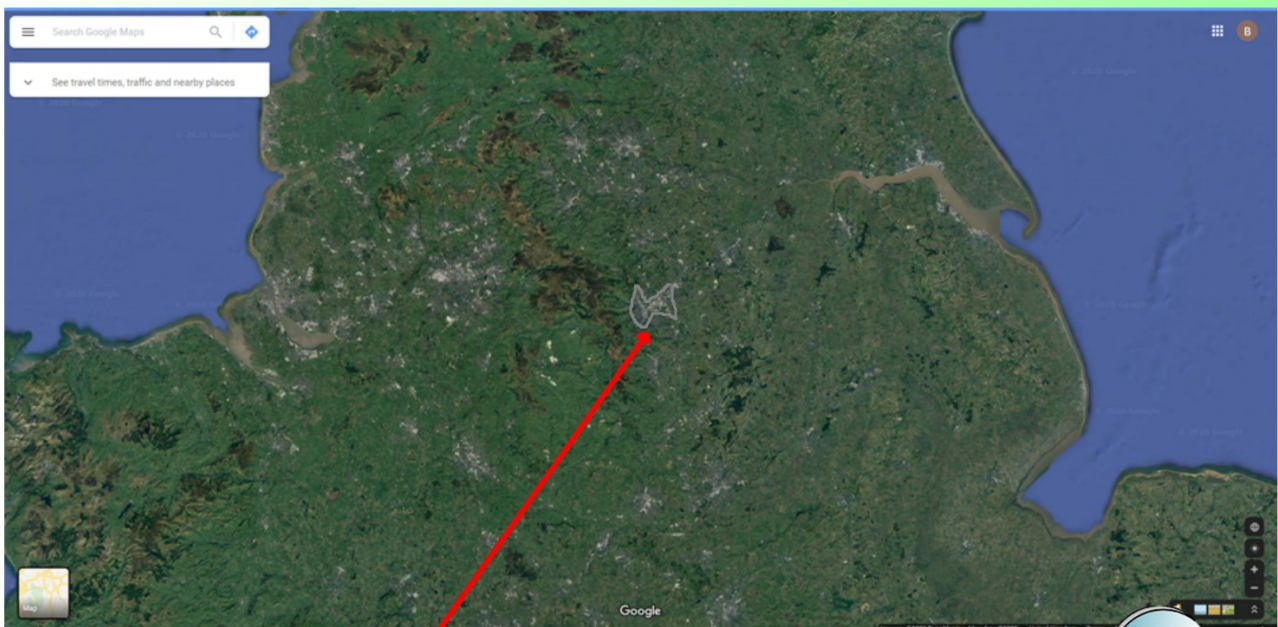
Do you know what the city we live in is called?



So here is Eccelsall Woods

and this grey area is our city Sheffield

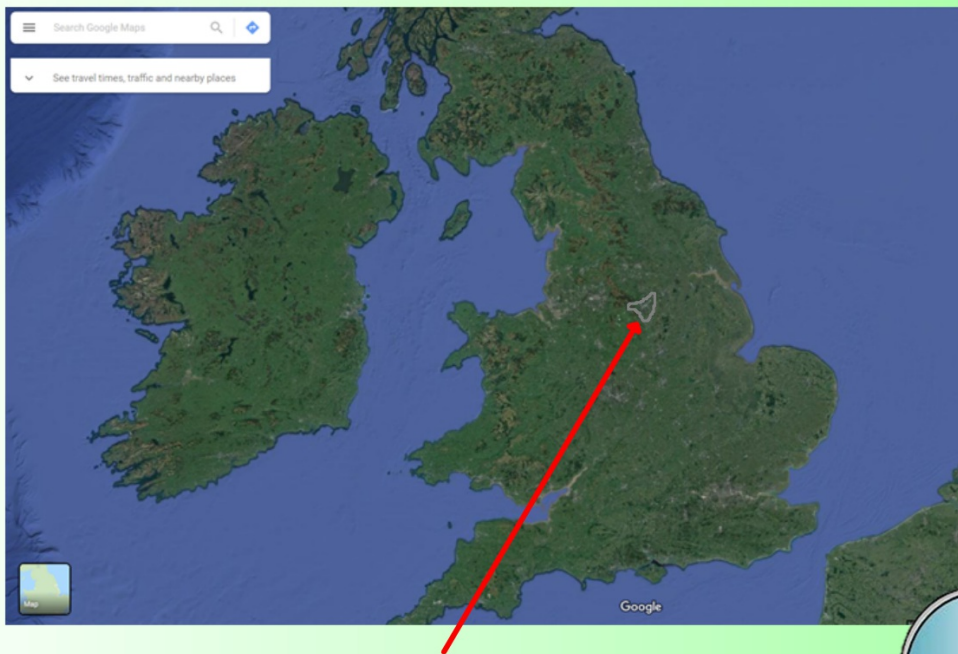
Let's zoom out a little further



Now sheffield looks very small



and zoomed out just a little more, we can now see all of the country we live in



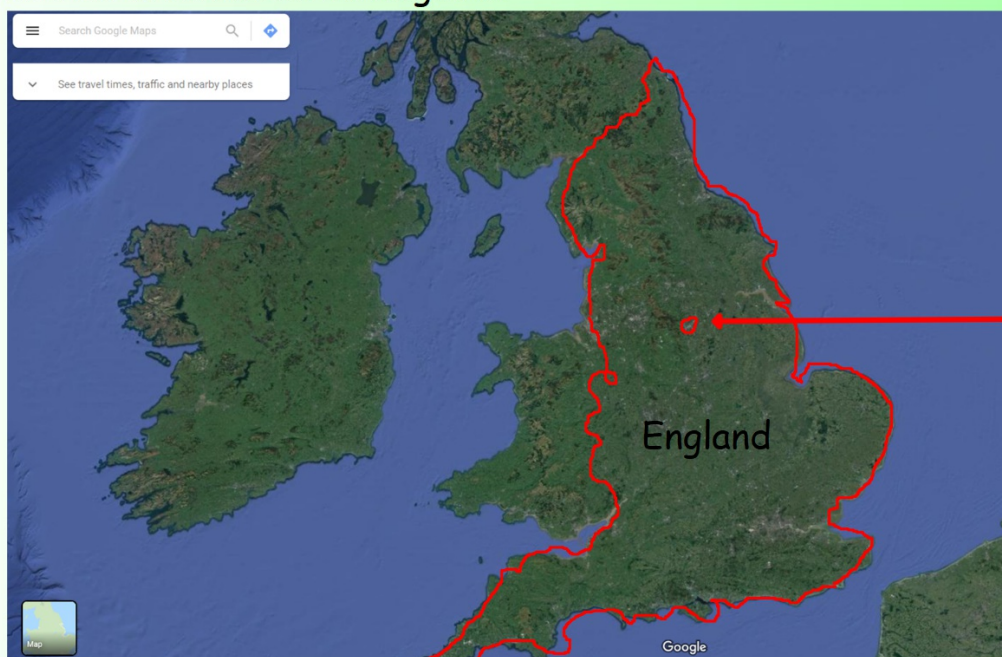
Here is sheffield again, just further away



Do you know the name of the country we live in?



The red area shows us England.



Here is
Sheffield

England is one of four countries which make up.....

The United Kingdom

TTYP What do you live in?

practise



 I live in



a house



a flat



a bungalow

practise

Finish the sentence

My name is _____

I live in a _____

My country

My city

My area



My country

My city

My area



Deepening

Write a sentence about what you like about your area, what can you do there?

Review and Improve

What is wrong with this sentence, can you fix it

I live in a city called sheffield and in a country called Scotland.

Remember places need capital letters at the start of them.

