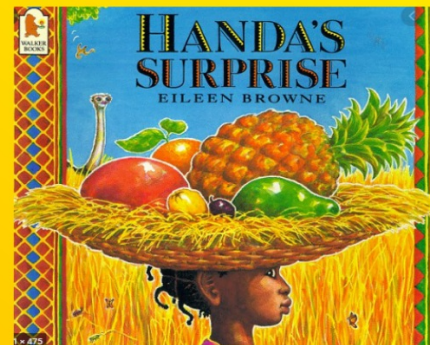


Engage  
(max 5 mins)

**Can anyone remember which continent we visited this week on our trip around the world?**



**This is also where our class text is set!**



**So today we are going to be looking at and creating our own African art!**

**WALT:** develop practical skills in colour, pattern, texture and form.

**Context:** African art and Lubaina Himid

### **Success Criteria**

- Learn about and understand the work of Lubaina Himid.
- Learn about pattern from different cultures using appropriate vocabulary to describe what you observe.
- Use observation skills to develop your own skills.
- Sketch to make quick records and practise using viewfinders.
- Choose appropriate colours for design on large scale patterns.

**Let's start by taking a look at the African fabrics on this slide.**



**With your partner / group, discuss the following**

- colours
- patterns
- shapes
- motifs (a dominant or repeated pattern in a piece of work)
- what might have inspired the patterns?



## East African Kangas

A Kanga is a colourful fabric. They are worn by women (and sometimes men) in East Africa.

A Kanga often carries great significance, strong messages and meanings. They have saying and proverbs printed onto them.



**Can you spot the messages written on these Kangas?**



They are multi purposeful and are most worn by women as a shawl, head scarf, baby carrier or around the waist.

Kangas are often given as gifts at special occasions especially birthdays and weddings.

### ***Examples of Swahili proverbs added to Kangas:***

- *Adui mpende (love your enemy)*
- *Usinisumbue (don't bother me)*
- *Mtaka yote hukosa yote (one who want all, usually loses all)*

## Who is Lubaina Himi

Lubaina Himid was born in Zanzibar Tanzania in 1954 and came to live in London when she was only 4 months old.



She attended art school and studied theatre design - being a trained stage designer, her work often feels quite theatrical.

She became a member of the Black Arts Movement in the 1980's. This movement included different black artists trying to encourage other black artists to show their work.

Lots of Lubaina Himid's art is about strength of the black people throughout history.

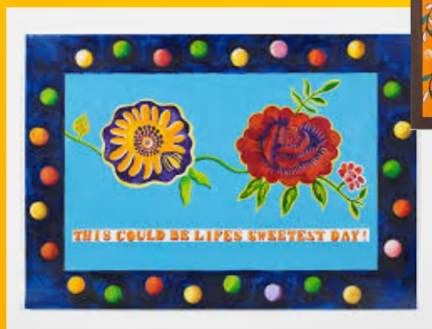
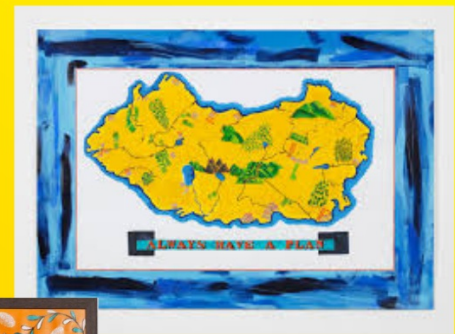
In 2017, Himid made history by becoming the first black woman and the oldest artist to receive the prestigious Turner prize for contemporary art.

## Lubaina Himid and East African Kang

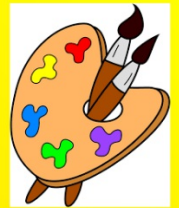
Lubaina Himid called the Kangas "speaking cloths".

For a long time, Himid has been making paintings that she calls Kangas. They are based on East African cloths with a pattern, a border, a central pattern and a motto.

Sometimes she attaches texts from poems.



We are now going to try and create our own African Kanga (or "speaking cloth") using inspiration from work of Lubaina Himi



## STAGE 1

Choose a pattern that you really like (from the cloths) and make a quick sketch of a small area (*using a pencil and paper*).



When you have done one, move on to another. Try and sketch 3 or 4 different patterns.

## **STAGE 2**



Choose one of the patterns that you have copied, and enlarge it onto your sheet, making sure it fills the central rectangle.

*This is to help us create the central pattern that is so iconic of Himid's own artwork!*

### **CHALLENGE**

To take your artwork one step further, can you incorporate a different design around the edge to create a border?

*(This can either be another one of the designs that you have sketched, or your own design!)*





## **STAGE 3**

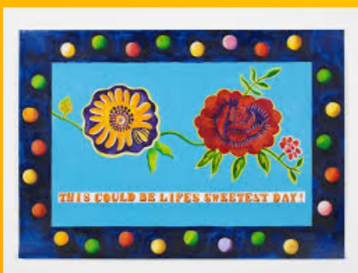


It's time to paint!

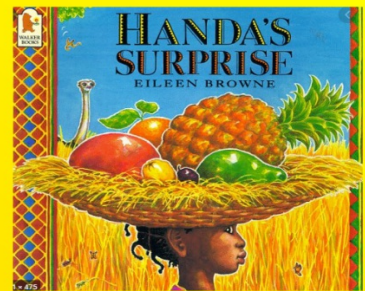
Choose 3 bright, bold colours that you would like to use on your design.

### **REMEMBER**

The patterns on an African Kanga are always very intricate and delicate - so take your time! We don't want all the colours to blend together.



## **STAGE 4**



**Can you incorporate a message to your Kanga?**

Lubaina Himid paints stories about friendship, love and kindness.

Use the concept of friendship from Handa's Surprise to write a message to accompany your Kanga.

