

Must Box

- Read your book for 10 minutes every day with an adult and **record this on your reading diary.**



- **Practise your maths facts:**

Can you keep a diary of the temperature this week? Record each temperature with °C.

Which day was the hottest?

Which was the coldest?

What is the difference?

Year 2

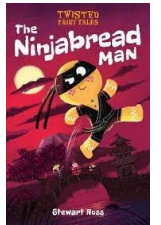
Homework Menu



Homework due in by: 24.4.24

Choose box

- Can you draw a sketch of your favourite flower or plant and label the different parts?
- Our new class text is “The Ninjabread Man” - a twisted version of the gingerbread man story. Have a go at baking a gingerbread person. Apply your weighing and measuring skills from your maths lesson this week to ensure you have the correct amounts.



No one wants to see a Ninjabread man causing trouble around Sheffield!!

- We have started learning about architecture in art. What famous buildings do you know? These can be in England or in other countries around the world. Either print photographs, sketch or write a list.
- Monday 22nd April is Earth Day. Think of ways you can help our planet by recycling, not using the car or turning lights out.

Spelling Rules

This week our spelling rule is
“j” spelt “dge” at the end of words

hedge

bridge

dodge

smudge

badge

nudge

ledge

grudge

Shooting Star words

pollen

mischievous

behaviour