

Year 1 Art Knowledge Organiser

Spring 1

Theme: Watercolour – Exploration & Discovery



Key Knowledge and Skills

Key Vocabulary

By the end of this unit pupils will...

Watercolour paint has special characteristics that can lead to elements of surprise and accident to help us create art. Through an open and exploratory approach we can discover what watercolour can do, how it acts and how we can “control” it, but also how watercolour itself can help reveal the “story” of painting. Emma Burleigh is an artist with a passion for watercolour and the way it is linked to mental and spiritual wellbeing. The work of Paul Klee inspires a strong sense of individuality and discovery through his unique style. The work of these two artists encourages creative exploration and experimentation and encourages children to try out new watercolour techniques. It is important that we develop our paintings by reflecting upon what we see, adding new lines and shapes to help develop imagery. The final painting will focus on the Titanic, linking other curriculum areas together.

Disciplines:

Painting (Watercolour)

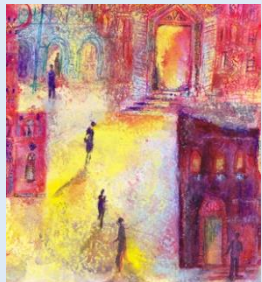
Medium:

Watercolour Paint, Crayons, Graphite Stick

Water colour, Wash, Wet on dry, Wet on wet, Mark making, Primary colours, secondary colours, Colour mixing, Fluid, Imagination, Imagine, Happy Accident, Explore, Discover, See, Develop, Scale, Reflect, Share, Discuss

Linked Artist:

Emma Burleigh



Paul Klee

